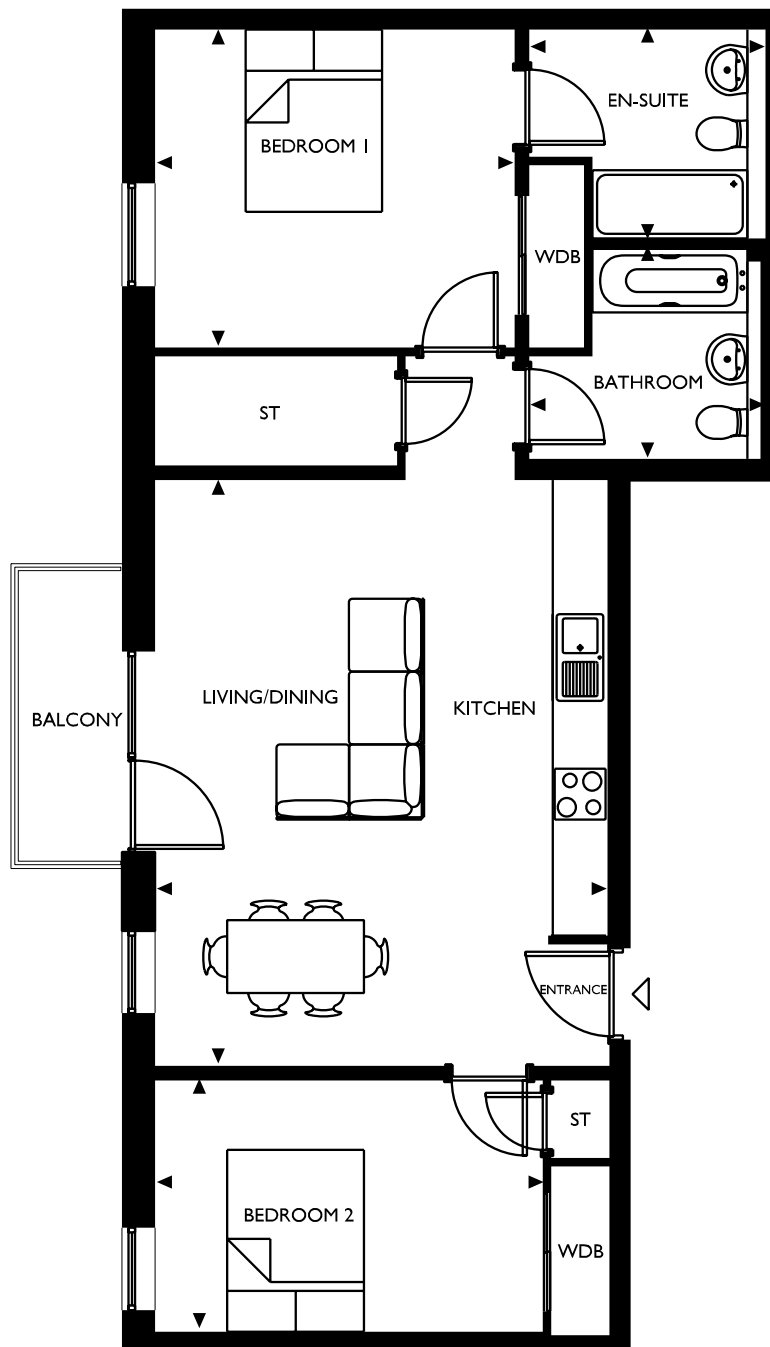
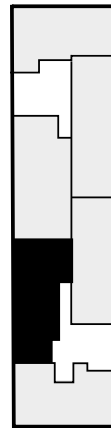


**Block B / Type 10 / Stair 5 / 2 Bedroom loft**

**Plot: 39, 57**

**Floor: Second & third**

Room	Metric	Imperial
Living/Dining/Kitchen	6435 X 4995	21'1" X 16'4"
Bedroom 1	3955 X 3490	13'0" X 11'5"
Bedroom 2	4260 X 2760	14'0" X 9'1"
Bathroom	2540 X 2305	8'3" X 7'6"
En-Suite	2595 X 2295	8'5" X 7'5"
<b>Total area</b>	<b>79.3m<sup>2</sup></b>	<b>854 ft<sup>2</sup></b>
Balcony	1135 X 3190	3'7" X 10'5"



All plans may be subject to change and consequently do not form part of any contract. Floor layouts are indicative only. All dimensions both metric and imperial are taken from points as indicated on the floorplans and are for guidance only. Please check with Selling Agent for current plot specific details before reserving. Floor and kitchen layouts are indicative only. Sizes are North/South then East/West.