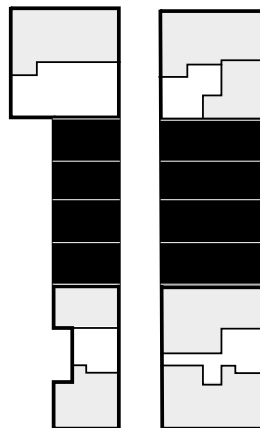


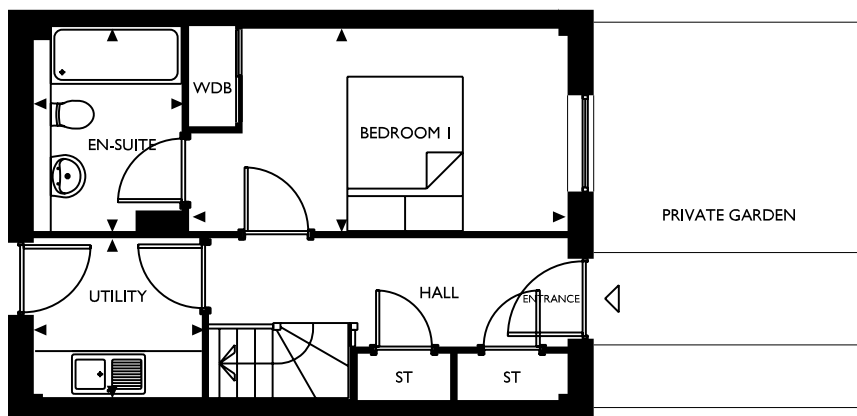
# Block B / Type 2 / 3 Bedroom garden duplex

Plot: 3, 4, 5, 6

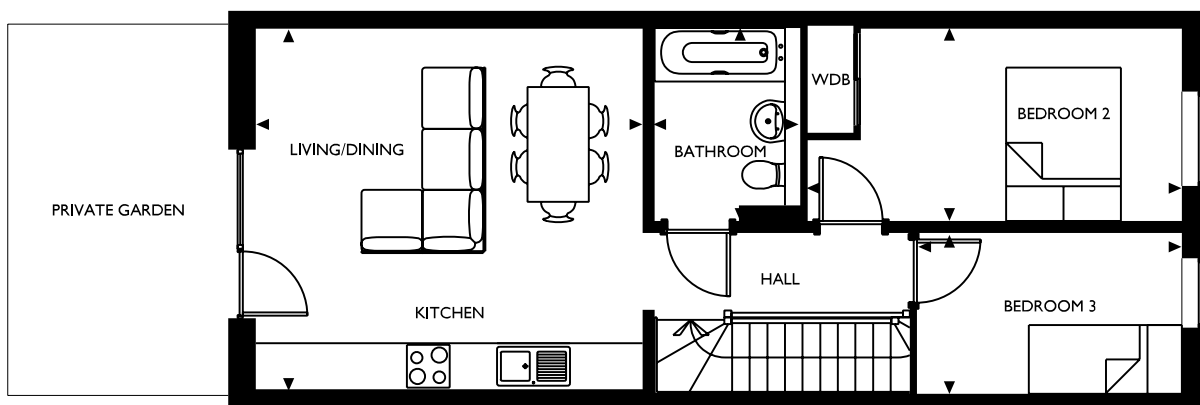
Floor: Ground & first



Room	Metric	Imperial
Living/Dining/Kitchen	5050 X 4710	16'6" X 15'5"
Bedroom 1	4910 X 2620	16'1" X 8'6"
Bedroom 2	4885 X 2510	16'0" X 8'2"
Bedroom 3	3455 X 2100	11'3" X 6'9"
Bathroom	2515 X 1900	8'3" X 6'2"
En-Suite	2660 X 1920	8'7" X 6'3"
Utility	2180 X 2060	7'2" X 6'8"
<b>Total area</b>	<b>90.6m<sup>2</sup></b>	<b>975 ft<sup>2</sup></b>
Garden	3530 X 2460	11'6" X 8'1"
Garden	3530 X 1260	11'6" X 4'1"
Garden	2875 X 4850	9'4" X 15'9"



GROUND FLOOR



FIRST FLOOR

All plans may be subject to change and consequently do not form part of any contract. Floor layouts are indicative only. All dimensions both metric and imperial are taken from points as indicated on the floorplans and are for guidance only. Please check with Selling Agent for current plot specific details before reserving. Floor and kitchen layouts are indicative only. Sizes are North/South then East/West.